



Sunday Hunting on Game Lands Stakeholder Update September 2, 2020





Sunday Hunting on Game Lands

Outdoor Heritage Enhanced Act of 2017

- Prohibits hunting:
 - between 9:30 a.m. and 12:30 p.m.;
 - deer with the use of dogs; and
 - within 500 yards of a place of worship.



Focus Groups

Guiding Principles

- *Simple, easy, and understandable*
 - *Partitioning of use (location, species, weapon) was opposed*
- *Resource comes first*
- Provide opportunities for all citizens
- Perception of safety differs among users
 - Educate, outreach, learn from this initial step
- Move carefully and deliberately
 - Lean and adapt, change in the future as we learn more



Focus Groups

Criteria

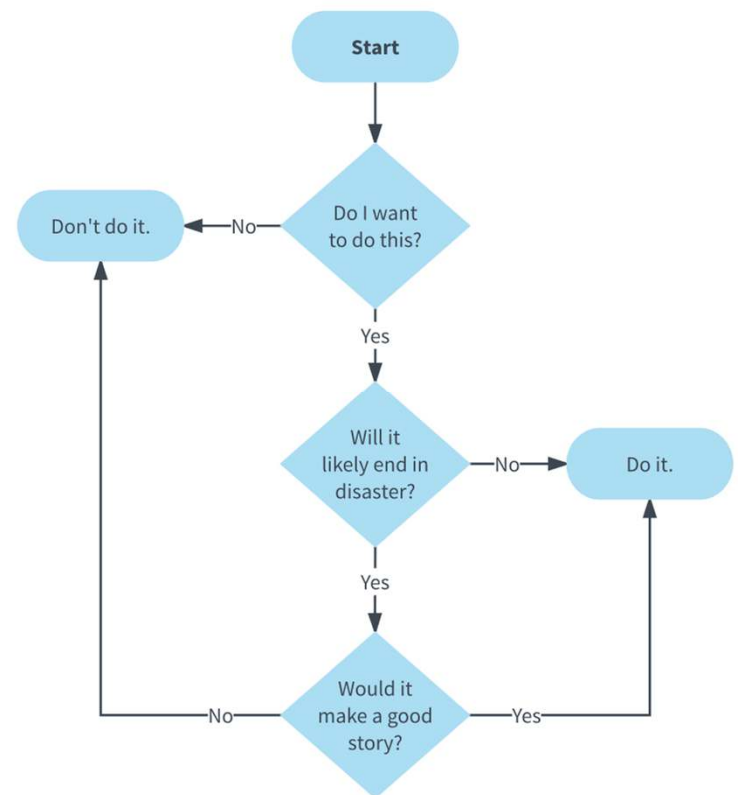
- Focus on rural game lands that are not heavily used by non-hunters
- Proximity to other game lands and public lands where hunting is prohibited
- Consider the value to unique properties that are important to user groups
- Avoid game lands where past conflict has been a pattern



WRC Retreat

Pre-Work

- Decision Matrix
- Shared with 27 participants beforehand
- Scored by Land and Water Access Team
- Feasible, Feasible with considerations, Not Feasible

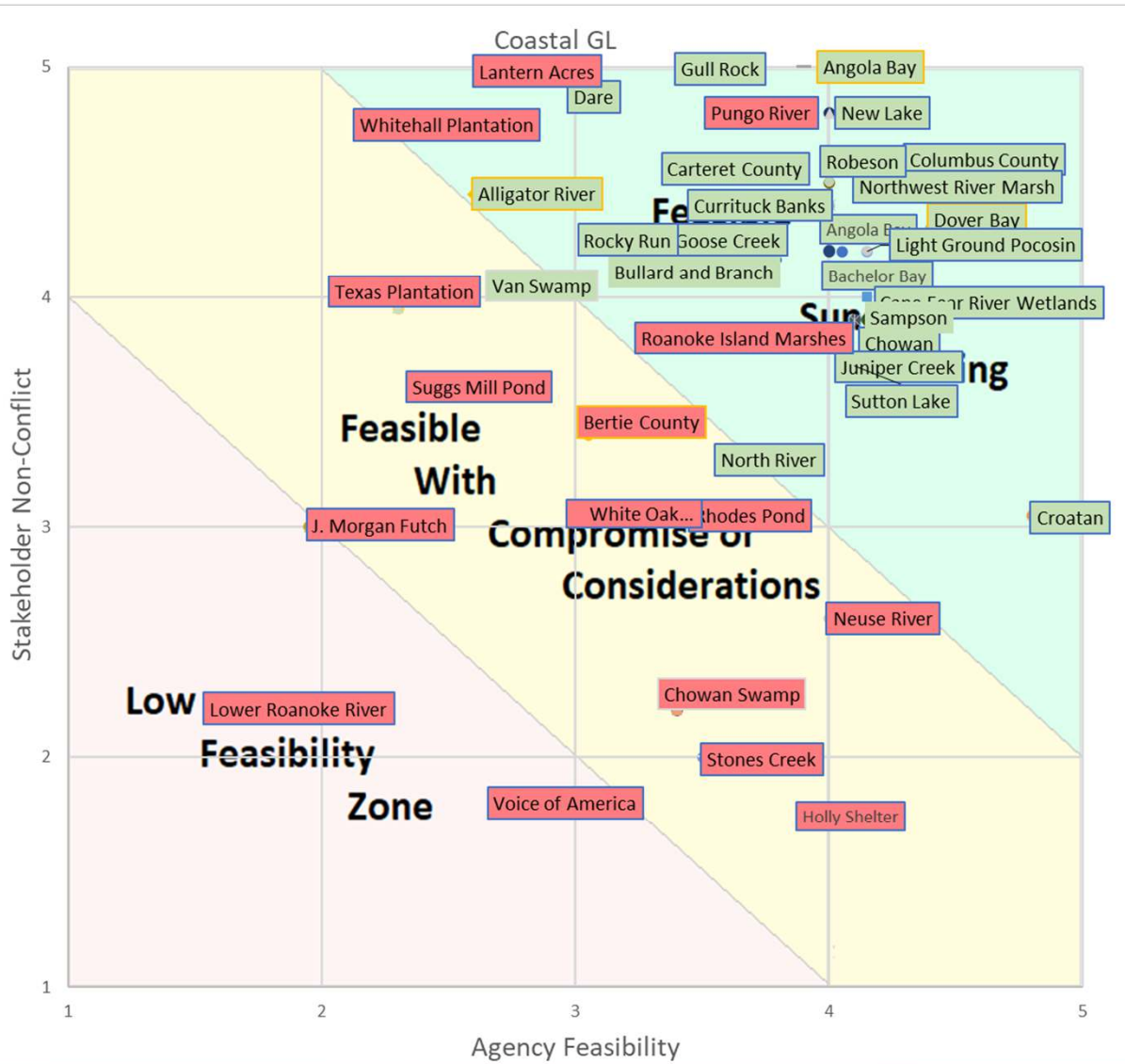


		Alligator River	Angola Bay
Agency Feasibility Factors			
Size of Game Land (<1000 1pt., 1000-10k 2-4 pts., >10k 5pts.)	Score (1-5)	5	5
	0.1		
Game species availability (Small number of huntable species 1 pt., most huntable species available, 5 pts.)	Score (1-5)	4	4
	0.15		
Infrastructure impacts of increased activity (High level of impact 1 pt, no impact 5 pts.)	Score (1-5)	1	1
	0.2		
Potential for overharvest of ANY game species or substantial resource disturbance with increased effort (high potential 1pt. no potential 5 pts.)	Score (1-5)	1	5
	0.3		
Game land hunting complexity *availability of hunting days, permit hunts (Highly complex 1pt., Low complexity 5pts.)	Score (1-5)	4	5
	0.25		

Stakeholder Considerations		Weighted Score (1-5):	
Level of hunting use vs. other use- also consider number of non-hunter specific attractions (high # of other users/non-hunt attractions 1pt., moderate # of other users/attractions 2-4 pts., primarily hunting use and low # of other users 5 pts.)	Score (1-5)	5	5
	0.25		
Proximity to urban centers (high population density); (<10 miles 1pt., 10-20 miles 2-4pts., >20 miles 5 pts.)	Score (1-5)	5	5
	0.15		
Proximity to alternative public lands for non-hunting recreation purposes (>20 miles 1pt., 10-20 miles 2-4 pts., <10 miles 5 pts.)	Score (1-5)	3	1
	0.2		
Level of other activities/participation being negatively impacted by Sunday Hunting (Significant impacts 1pt., moderate impacts 2-4 pts., No impacts 5pts.)	Score (1-5)	5	5
	0.25		
Level of acceptance/non-conflict with adjacent landowners (Low acceptance/high conflict 1 pt., moderate acceptance/conflict 2-4 pts., high acceptance/low conflict 5 pts.)	Score (1-5)	5	5
	0.15		
		Weighted Score (1-5):	
		4.6	4.2
Total Value		7.2	8.25

Decision Matrix





Feasibility Chart



Staff Recommendations and Considerations

Recommendation

- Allow Sunday hunting on 57 of 94 game lands

Considerations

- Four-day-per-week game lands (6 game lands)
 - Tuesday, Thursday, Saturday, and Sunday
- Hunting with Dogs
- Resource Protection



Staff Recommendations and Considerations

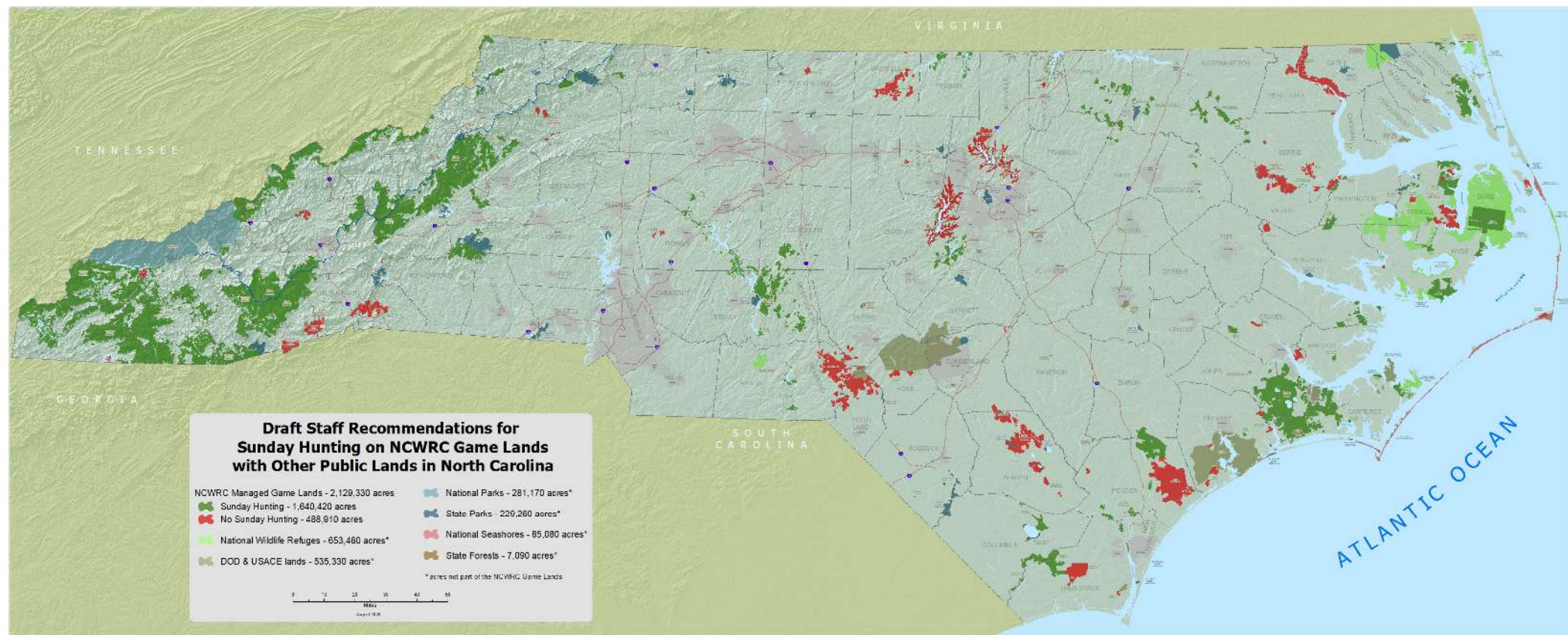
Considerations

- Resource Protection
 - Turkey
 - Deer
 - Bear

Next Step

- Rule text in October
- Public meetings in January







COASTAL REGION


Draft Staff Recommendations for Sunday Hunting on NCWRC Game Lands with Other Public Lands in North Carolina

NCWRC Managed Game Lands, Coastal Region - 633,730 acres

 Sunday Hunting - 395,360 acres


 No Sunday Hunting - 238,370 acres


 National Wildlife Refuges

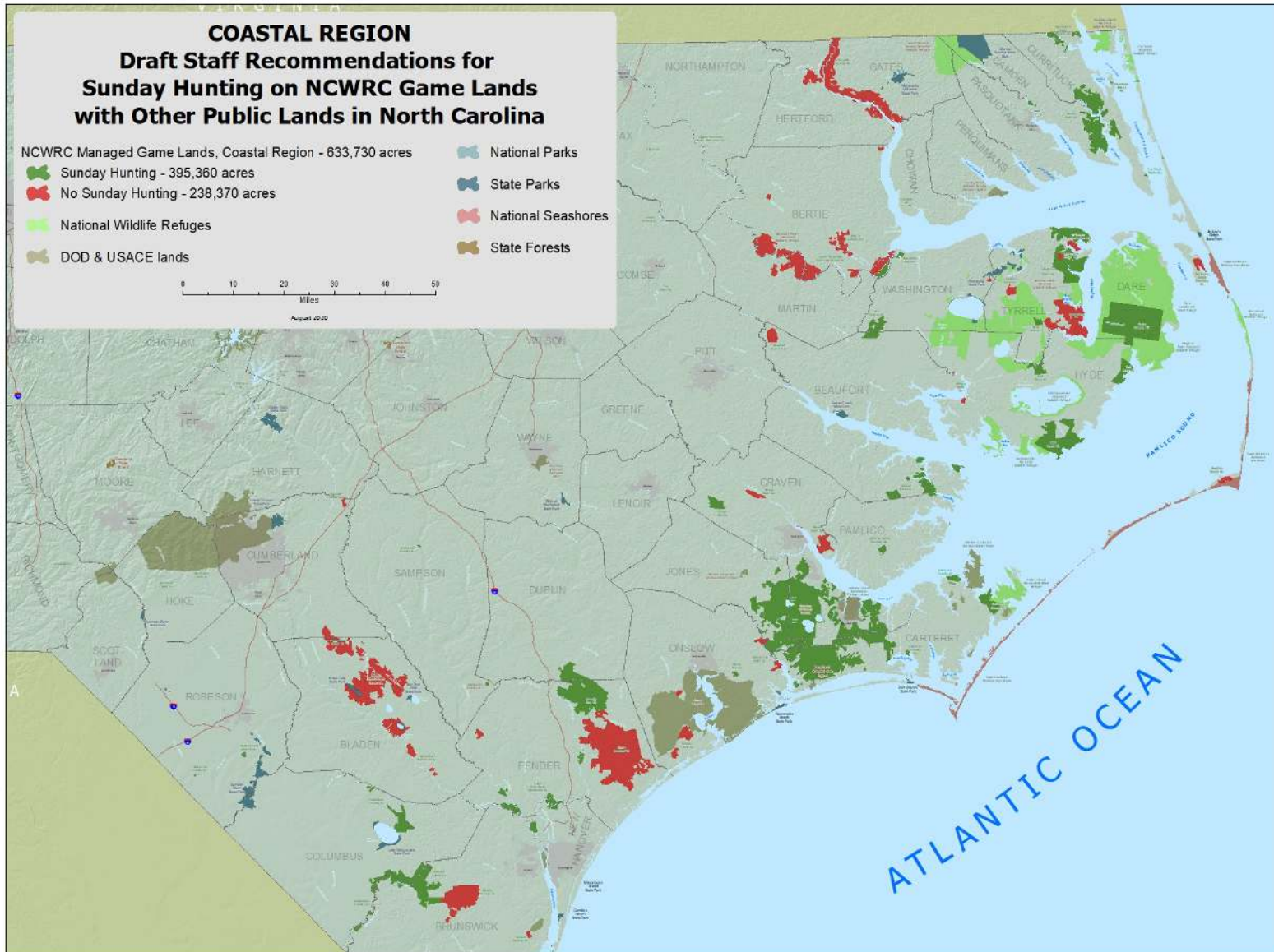
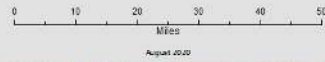
 DOD & USACE lands

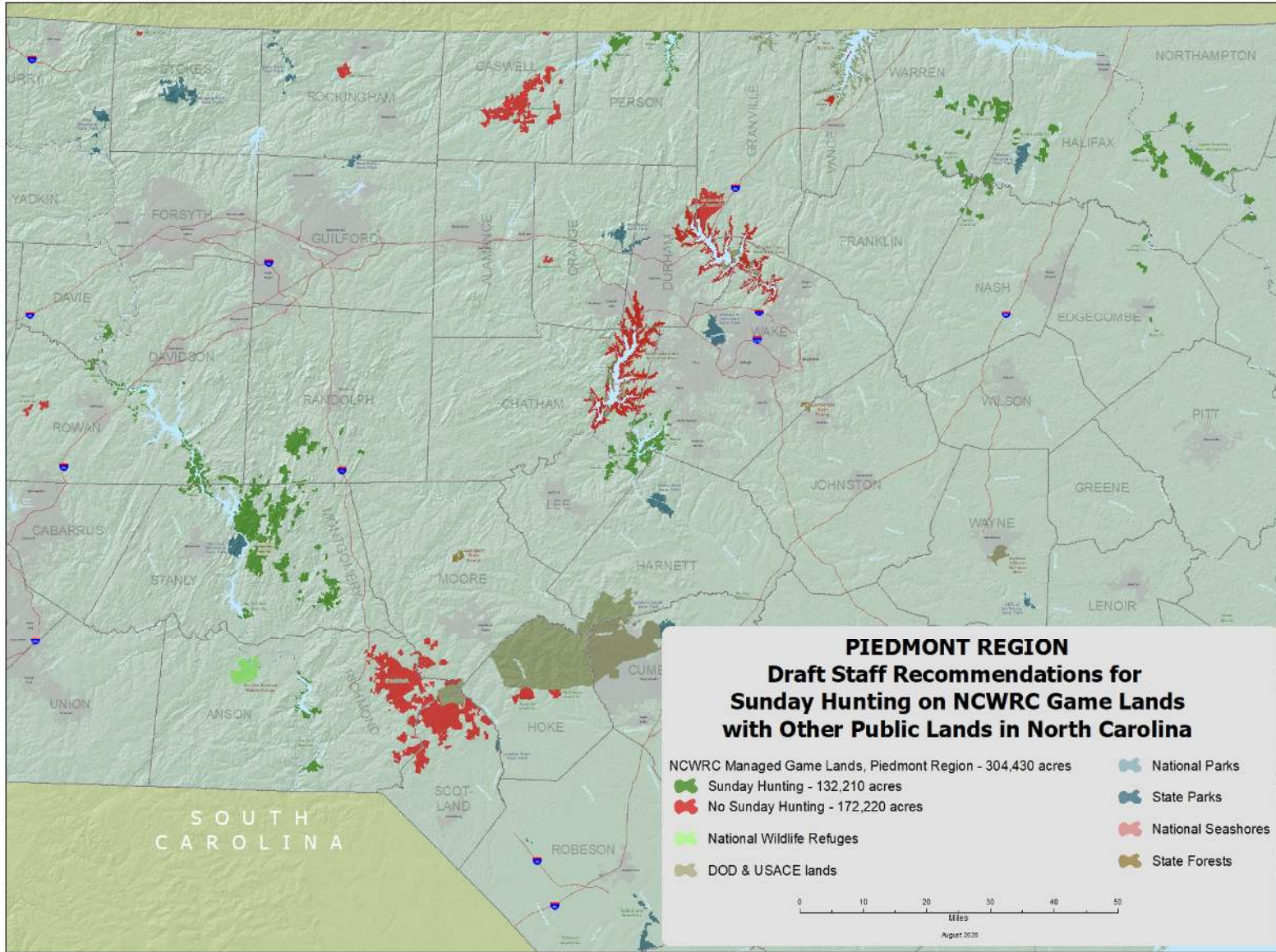
 National Parks

 State Parks

 National Seashores

 State Forests

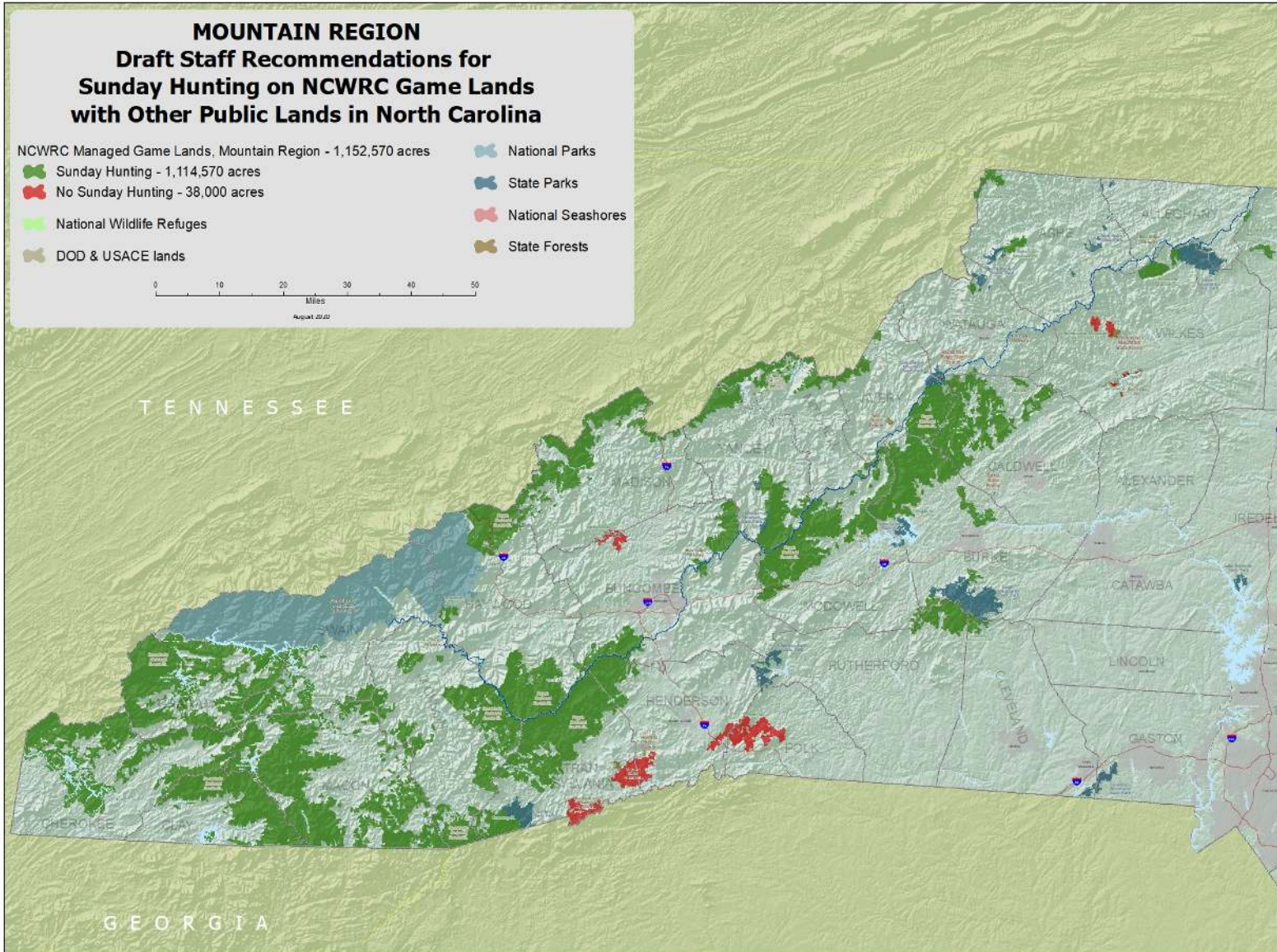




SOUTH
CAROLINA

MOUNTAIN REGION Draft Staff Recommendations for Sunday Hunting on NCWRC Game Lands with Other Public Lands in North Carolina

- | | |
|---|--|
| <ul style="list-style-type: none"> ■ NCWRC Managed Game Lands, Mountain Region - 1,152,570 acres ■ Sunday Hunting - 1,114,570 acres ■ No Sunday Hunting - 38,000 acres ■ National Wildlife Refuges ■ DOD & USACE lands | <ul style="list-style-type: none"> ■ National Parks ■ State Parks ■ National Seashores ■ State Forests |
|---|--|



Sunday Hunting on Game Lands

Notes from Staff Retreat and Draft Staff Recommendations

Game Land Name	Notes	Sunday Hunting (Yes/No/Not now)
Coastal Region		
Alligator River	Large, 24,000 acres, many species available, important to birders, nearby public land without Sunday hunting (Alligator River NWR, Pettigrew State Park), Buckridge Game Land nearby	Yes
Angola Bay	34,000 acres, all game species available, a lot of roads in organic soil, Low overharvest risk, low nt use, some birding and horseback riding, no conflicts with landowners, very close to Holly Shelter Game Land	Yes
Bachelor Bay	TNC property, they supportive of Sunday hunting at this location, boat access only	Yes
Bertie County	Moderate infrastructure impact, overharvest potential	Not now
Bladen Lakes State Forest	No, landowner opposed to Sunday hunting.	No
Buckridge	No, landowner opposed to Sunday hunting.	No
Bullard and Branch Hunting Preserve	No impacts to infrastructure (no roads/trails), no overharvest, low nt users, mainly hunters, close to Lumber River state park, no conflicts expected	Yes
Buxton Woods	No, landowner opposed to Sunday hunting.	No
Cape Fear River Wetlands	Large, 7,200 acres, Low impact to infrastructure expected, no overharvest expected, mainly hunters, no sensitive species, low nt use, close proximity to alternative land	Yes
Carteret County	7,100 acres, All species available, a lot of roads, low overharvest, rural, low nt use, few conflicts expected, Cedar Island NWR nearby	Yes
Chowan	Small, low impact, boating access only, no use of nt users	Yes
Chowan Swamp	Limited access increases pressure on good access sites, horseback riding only on Sundays during hunting season, no nearby lands for them, dedicated horseback riding parking lot and trail have been developed	No



Columbus County	10,000 acres, low overharvest risk, minimal infrastructure, low nt use, Lake Waccamaw State park near one tract	Yes
Croatan National Forest	Low overharvest potential, not complex, has horse trails and bike trails, high nt use, state parks near by, USFS supports allowing hunting on Sunday	Yes
Currituck Banks	Nearby parks, low impact on other uses, no issue from TNC partnership; Jockey Ridge State Park is nearby	Yes
Dare	Permit hunting, low potential for overharvest, low impact for infrastructure, surrounded by Alligator River NWR	Yes
Dover Bay	No infrastructure, rural, low overharvest, low nt use	Yes
Goose Creek	All species available, no infrastructure issues, mild complexities, low nt use, mainly hunters, rural, little conflict expected	Yes
Green Swamp	TNC is the landowner-opposed to Sunday hunting	No
Gull Rock	Low risk of overharvest, low impact on other uses, rural, no conflicts	Yes
Holly Shelter	Large, 60,000 acres, high infrastructure impact, high nt use (walkers, bikers, geocachers), Geocaching only allowed on Sundays, Mountains to See Trail through it, no overharvest concerns, not many other public lands nearby, very near Angola Bay Game Land	No
J. Morgan Futch	Other local public land nearby, mostly waterfowl impoundments- too much disturbance, permit only	No
Juniper Creek	20,000 acres, some infrastructure in the form of roads, no overharvest risk to most species, some concern about bear harvest, low nt use, primarily hunters, close to Lake Waccamaw state park, close to Green Swamp Game Land	Yes
Lantern Acres	Permit for waterfowl and turkey, alternative public lands nearby, potential for overharvest for deer and too much disturbance to waterfowl impoundments	No
Light Ground Pocosin	Not much game species, low overharvest potential, no infrastructure, rural, low nt use, low conflict, no other public lands nearby	Yes
Lower Roanoke River Wetlands and Roanoke River NWR	Permit only, potential for overharvest, high impact for nt users	No
Neuse River	All species available, some potential for overharvest, moderate nt use (bikers, runners, horseback riders), close to urban center (New Bern)	Not now



New Lake	Minimal access, low nt use, low conflict, no harvest issues, rural, Mattamuskeet and Pocosin NWRs nearby	Yes
North River	Some nt use, close to Dismal Swamp state park, large enough for Sunday hunting, mainly hunters, rural,	Yes
Northwest River Marsh	Remote, BAA access only, low use in general, not much nt use, Mackay Island NWR, Great Dismal Swamp NWR nearby	Yes
Pungo River	TNC partnership, mostly marshes, access by boat-low use, but only hunting waterfowl (can't doSundays)	Not now
Rhodes Pond	Small, few game species available, PFA on site, other users could be impacted	No
Roanoke Island Marshes	Only waterfowl-permit only	No
Robeson	Low potential for overharvest, primarily hunting use, little nt use, close to other public lands (Lumber River State Park), small tract	Yes
Rocky Run	Low species availability, permit only, low nt use, mainly hunters, public land close by (Hammocks Beach State Park), no conflicts expected	Yes
Sampson	No infrastructure, no potential for overharvest, primarily hunting use	Yes
Stones Creek	High impact on infrastructure (sandy, organic soil roads), close to urban centers, high nt use on Sundays (geocaching), Mountains to Sea Trail through tract	No
Suggs Mill Pond	Large, all species except bear, other use on lakes, Mountains to Sea Trail crosses game land	Not now
Sutton Lake	Low nt use, no conflicts expected, conservative deer season, no infrastructure impacts	Yes
Texas Plantation	Overharvest potential on some species, waterfowl impoundment main purpose of game land, disturbance potential for waterfowl	No
Van Swamp	Heavy use of dogs for deer, bear hunts in Nov/Dec, options for other hunts and nt use nearby-minimizes risk for overharvest, Pettigrew State Park, RR NWR nearby. VOA Game Land nearby.	Yes
Voice of America	Permit only, very popular for birding, hiking, biking, plant viewing, near Greenville, Washington	No
White Oak River	Moderate infrastructure impact (organic soils), some complexity, high nt use on northern tract (walkers, bikers, hikers, horseback riders), some existing conflicts with landowners	No
Whitehall Plantation	Permit only, potential disturbance to waterfowl, primarily hunting, Mountains to Sea Trail may cross through in future	No
Piedmont Region		



Alcoa	Large game land, important to hunters, near Morrow Mnt State Park, low conflicts expected	Yes
Brinkleyville	Large, Rural, all species available, important to hunters, low nt use, next to Medoc Mt state park	Yes
Buckhorn	Permit and archery only (deer only), small, nt use also, close to Burlington, conflicts with adjacent landowners	No
Butner-Falls of Neuse	Corps of Engineers is the landowner, they opposed to Sunday hunting at this location, very high nt use, close to Raleigh/Durham, existing conflicts with adjacent landowners,	No
Chatham	All species available, low nt use, close to state parks (Haw River, Raven Rock), close to Jordan Game Land	Yes
Dan River	Newer game land, local interest, a lot of interest in trails and river access, new BAA being constructed on site, close to Mayo River State Park, heavy river use, potential for overharvest, near Greensboro and Burlington	Not now
Embro	large, 8,000 acres, rural, important to hunters, little nt use, similar to Brinkleyville, right next to it	Yes
Harris	Next to Chatham and Lee, nt users prevalent, close to state parks (Haw River, Raven Rock, Deep River), close to Jordan Game Land	Yes
Hill Farm	very small, 156 acres, potential for overharvest, Permits, high nt users, potential conflict with landowners, Hanging Rock State Park is close	No
Hyco	Little use by non-hunters, rural, far from public lands or urban center, low conflict with landowners	Yes
Jordan	Corps of Engineers is the landowner, they opposed to Sunday hunting at this location, very high nt use, close to Raleigh/Durham, Chapel Hill, existing conflicts with adjacent landowners	No
Lee	Low nt use, mostly hunters, close to other parks for nt users (Haw River, Raven Rock), close to Jordan Game Land, close to Raleigh	Yes
Linwood	Moderate hunting, no conflict w/ landowners	Yes
Lower Fishing Creek	Low nt use, mainly hunters, rural, far from other public lands or urban centers, high game species availability, little conflicts expected	Yes
Mayo	Large, all game species available, no complex rules, low nt use, mostly hunters, rural, not near urban centers	Yes
Nicholson Creek	Relatively small, near Ft. Bragg. Some issues with adjacent landowners, potential for overharvest, increase in conflicts with adjacent landowners, PFA on game lands, Weymouth Woods Nature Preserve nearby	Not now
Pee Dee River	Multiple counties, dog restrictions, close to urban centers, some adjacent areas for nt user (Pee Dee NWR, Morrow Mnt State Park), diversity of species to hunt, some horseback riding and camping	Yes
Perkins	One county, mostly hunting use, no known conflicts	Yes



R. Wayne Bailey-Caswell	High nt users, dedicated horseback riding trails and parking lots, high birding use, a lot of hunting pressure, high overharvest potential, no public lands close by	Not now
Rockfish Creek	TNC is the landowner-opposed to Sunday hunting	No
Sandhills	Low infrastructure impacts, potential for overharvest (deer, fox squirrel), complex regulations and multiple counties, heavy nt use (birders, horseback riders), specific infrastructure for horseback riders (3 parking lots)	No
Sandy Creek	All species available, low nt use, mostly hunters, rural, Medoc Mnt State Park is close, no conflicts with others	Yes
Second Creek	Permit hunts, infrastructure is ok, moderate risk of overharvest, co-op farmers use land-potential conflict, mostly used by hunters, small size	Not now
Shocco Creek	All game species available, no overharvest concerns, close to Medoc Mt state park, low nt users, mostly hunting use, few conflicts expected	Yes
Tar River	Permit only, low nt use, small, close to county parks for nt users	Yes
Tillery	Low nt use, far from urban centers, low conflict with landowners, all species available	Yes
Upper Roanoke River Wetlands	Large, permit only, all species, low nt use, not close to urban centers, no conflicts expected	Yes
Uwharrie National Forest	Large game land, Heavy Sunday nt use, some recreation areas, many species available, low potential for overharvest, close to other recreational opportunities; USFS supports allowing hunting on Sunday	Yes
Vance	Small, 85 acres, no centerfire riles allowed, Corps of Engineers doesn't have Sunday hunting on their nearby land, so it's complex to do it on this game land, overharvest could be high, existing conflicts with adjacent landowners	No
Mountain Region		
Buffalo Cove	Low nt use, no special amenities (one riding trail), rural, hard to get to, close to Pisgah for nt users	Yes
Cold Mountain	Close to other land for nt use, high hunting use	Yes
Dupont State Forest	No, landowner opposed to Sunday hunting.	No
Elk Knob	No nt use allowed, landowner agreeable to Sunday hunting	Yes



Green River	Popular with nt users, 3rd highest density in Mnt of ebird data, but concentrated in specific areas-hunting in different areas, nt users fine with Sunday hunting, close to other options for nt use, perception of allowing Sunday hunting is a concern	Not now
Headwaters State Forest	No, landowner opposed to Sunday hunting.	No
Johns River	Permit only, looking to see if we can fit more hunts in	Yes
Kerr Scott	Small tracts, high nt use, current restrictions on hunting	No
Mitchell River	Limited game, remote, 3 day a week area, going to 4 day wouldn't impact pressure on game if added Sundays	Yes
Nantahala National Forest	2 sections asked to exclude from Sunday hunting by rangers (Jack Rabbit and Tsali). [USFS sent email to retract this request about Jack Rabbit and Tsali]. Support from Sunday hunting from focus group participants; USFS supports allowing hunting on Sunday	Yes
Needmore	Close to other tracts for nt use, rural, Little Tennessee River through middle (watersport users), some traditional ideas about Sunday as a day of rest	Yes
Pisgah National Forest	USFS supportive of Sunday hunting on Pisgah, support from focus group participants	Yes
Pisgah WRC	Shared borders with US Forest Service-manage the same as USFS property	Yes
Pond Mountain	Remote, some nt use but more hunting than nt, low on ebird data/use	Yes
Rendezvous Mountain State Forest	No, landowner opposed to Sunday hunting.	No
Sandy Mush	Close to Asheville, 3 day a week, heavy use on game land for hunting, birding, butterfly watching, research, heavy use via ebird data, college trips, disjunct tracts	No
South Mountains	Some nt use-adjoints South Mountain state park	Yes
Three Top Mountain	Some nt use, some hunting, close to Elk Knob state park, no conflicts expected	Yes
Thurmond Chatham	Not much nt use, mostly hunters, next to Stone MT state park	Yes
Toxaway	Close to state park for nt use, some hiking but not enough for conflict	Yes
William H. Silver	Close to Great Smoky Mnt National Park for nt use, close to Rendezvous mnt, lot of use for hunting bear/hog/elk and deer	Yes

