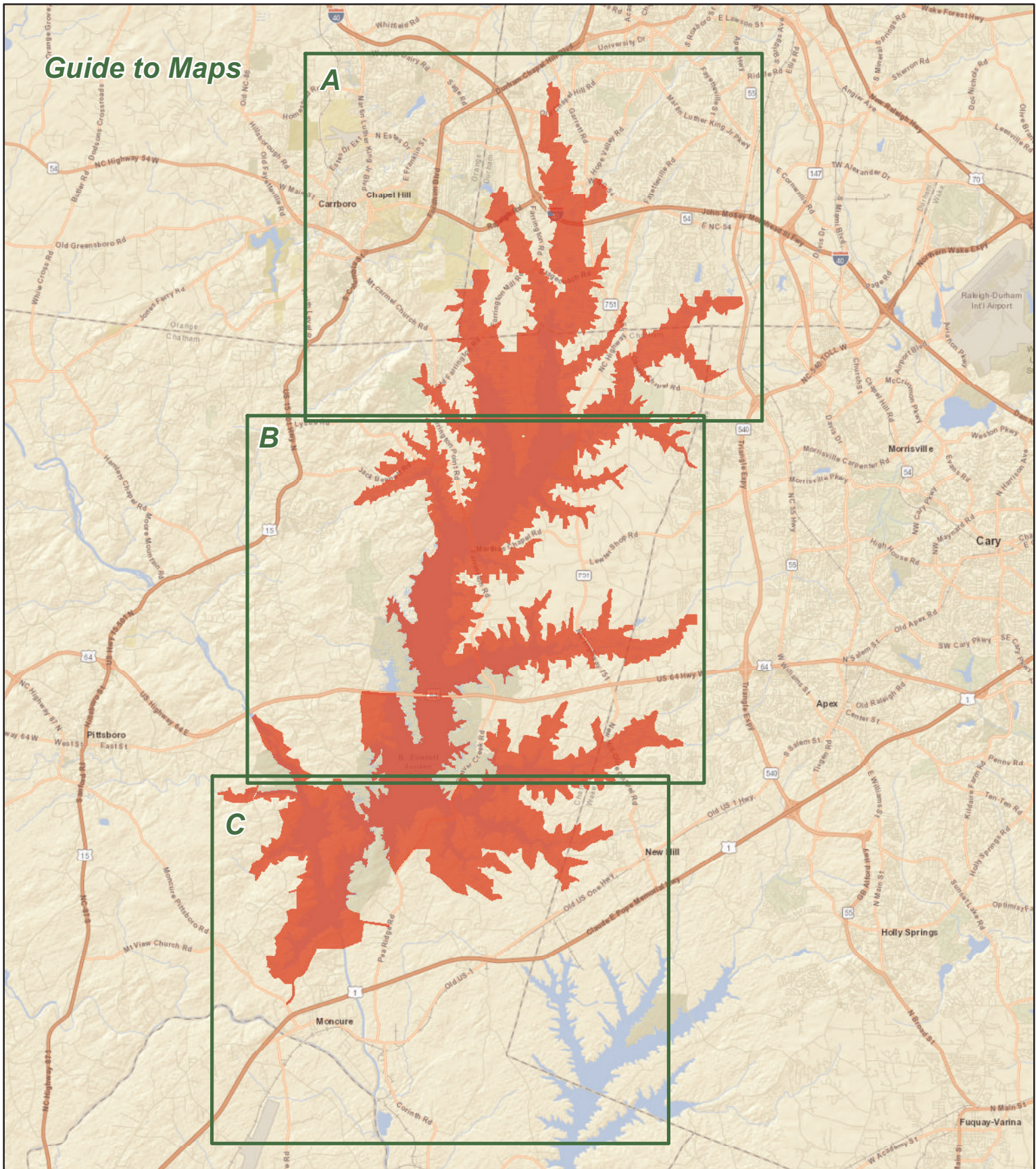


# JORDAN GAME LAND

U.S. Army Corps of Engineers, N.C. Wildlife Resources Commission  
Chatham, Durham, Orange and Wake Counties (40,460 total acres)



## Guide to Maps



### Game Land Type

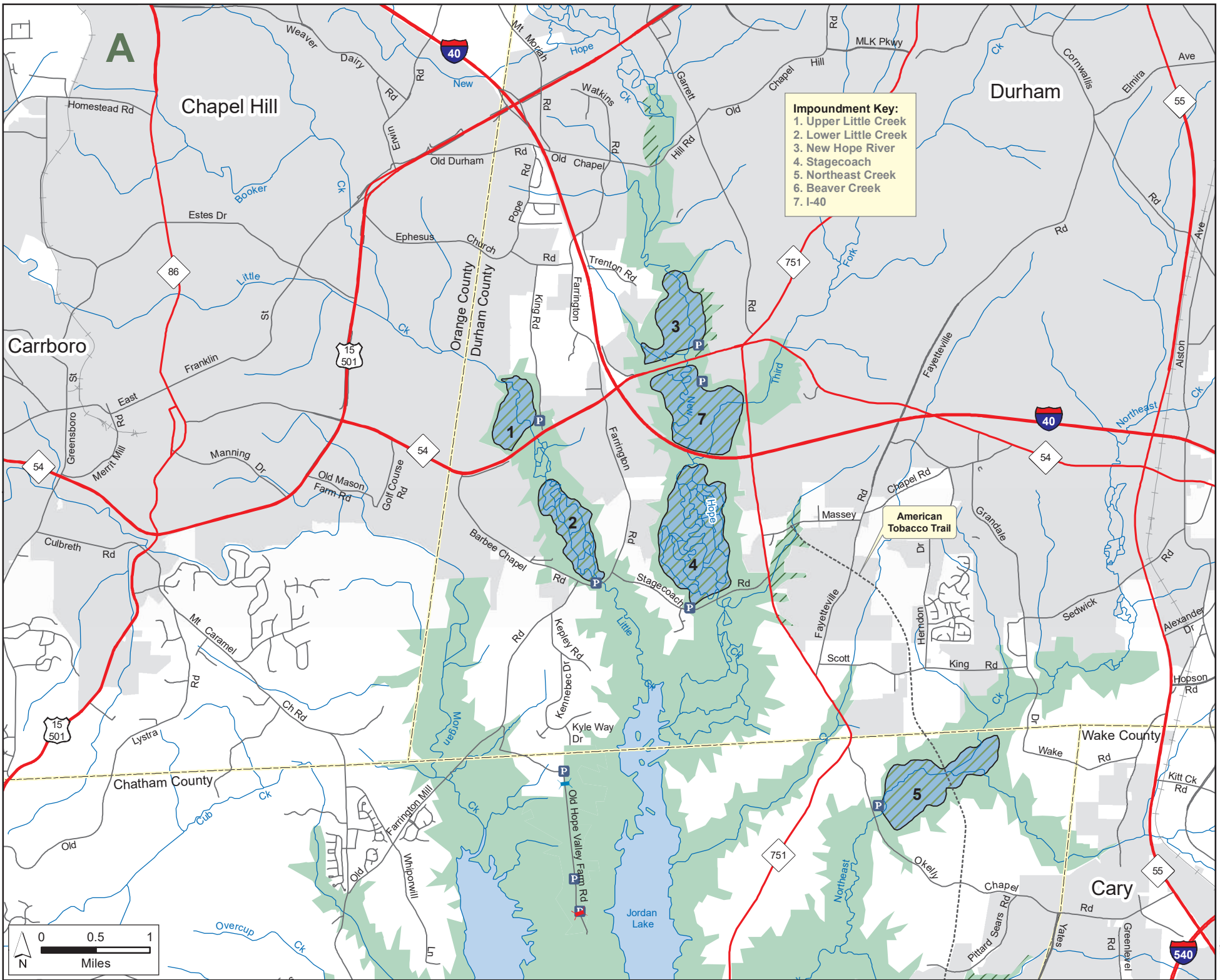
- Archery Zone
- Game Land
- Safety Zone
- Waterfowl Impoundment

- Observation Deck
- Permanently Closed Gate
- Seasonally Closed Gate
- Public Parking
- Non-WRC Boating Access

- WRC Boating Access Area
- Public Fishing Area
- Hunter Access Road
- Secondary Road
- Trail

Note: 2021-2022 Flooding Schedule for Numbered Waterfowl Impoundments includes Nos. 1, 4 and 6. Special regulations apply on American Tobacco Trail. All of the surface area of Jordan Lake is game land.



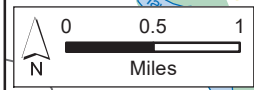
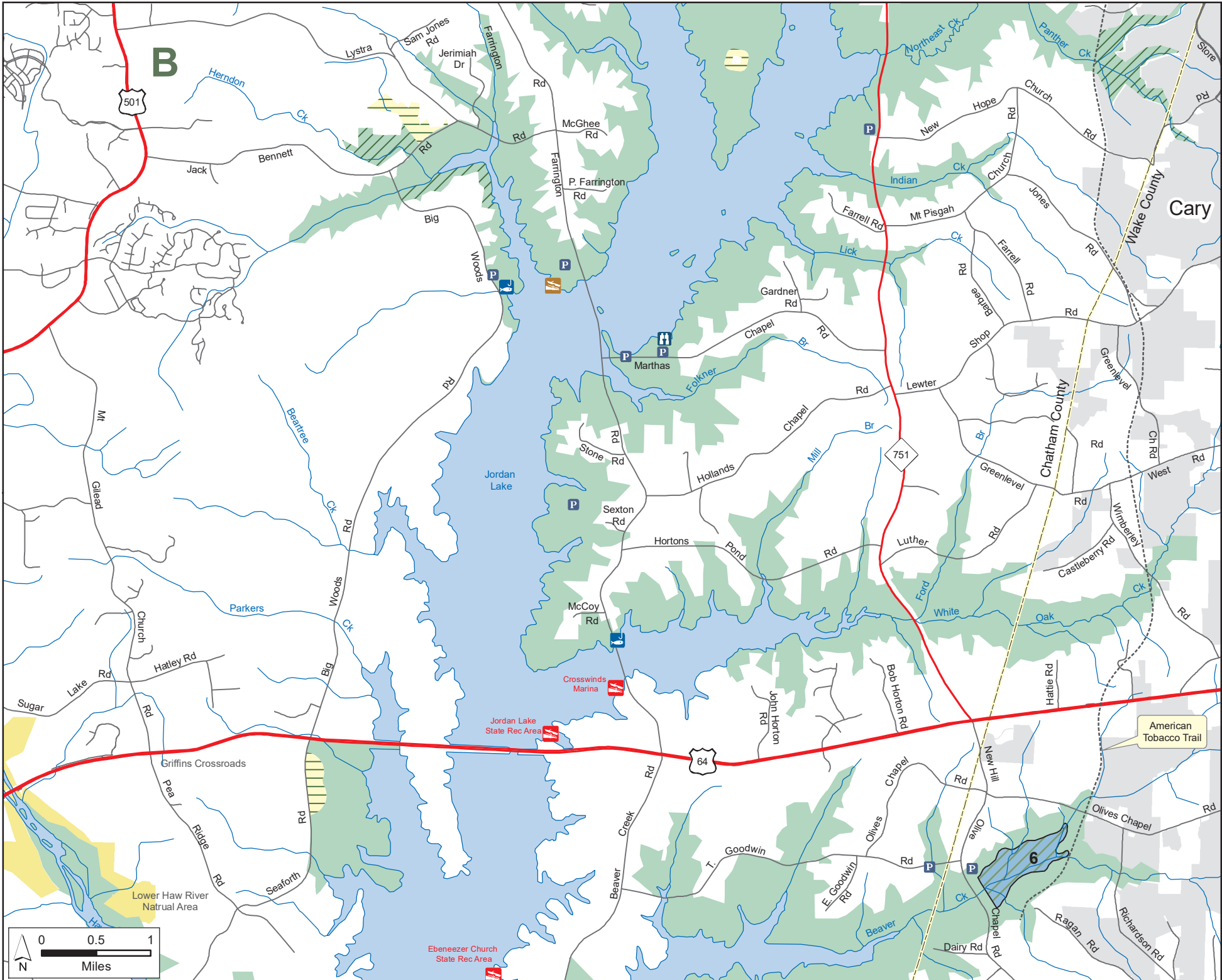


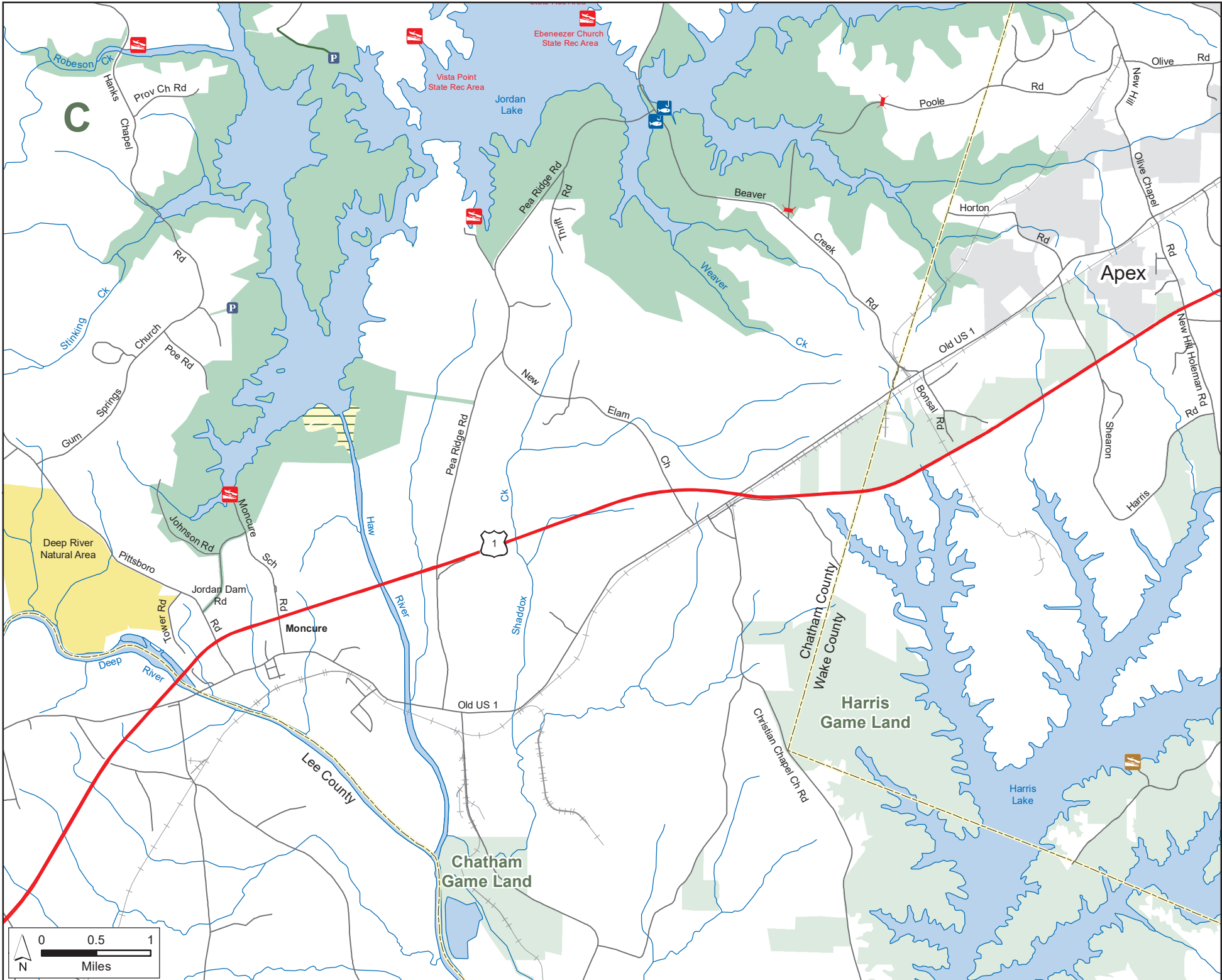
**Impoundment Key:**  
 1. Upper Little Creek  
 2. Lower Little Creek  
 3. New Hope River  
 4. Stagecoach  
 5. Northeast Creek  
 6. Beaver Creek  
 7. I-40

**American Tobacco Trail**



**JORDAN GAME LAND (continued)**  
U.S. Army Corps of Engineers, N.C. Wildlife Resources Commission  
Chatham, Durham, Orange and Wake Counties





**JORDAN GAME LAND (continued)**  
 U.S. Army Corps of Engineers, N.C. Wildlife Resources Commission  
 Chatham, Durham, Orange and Wake Counties

