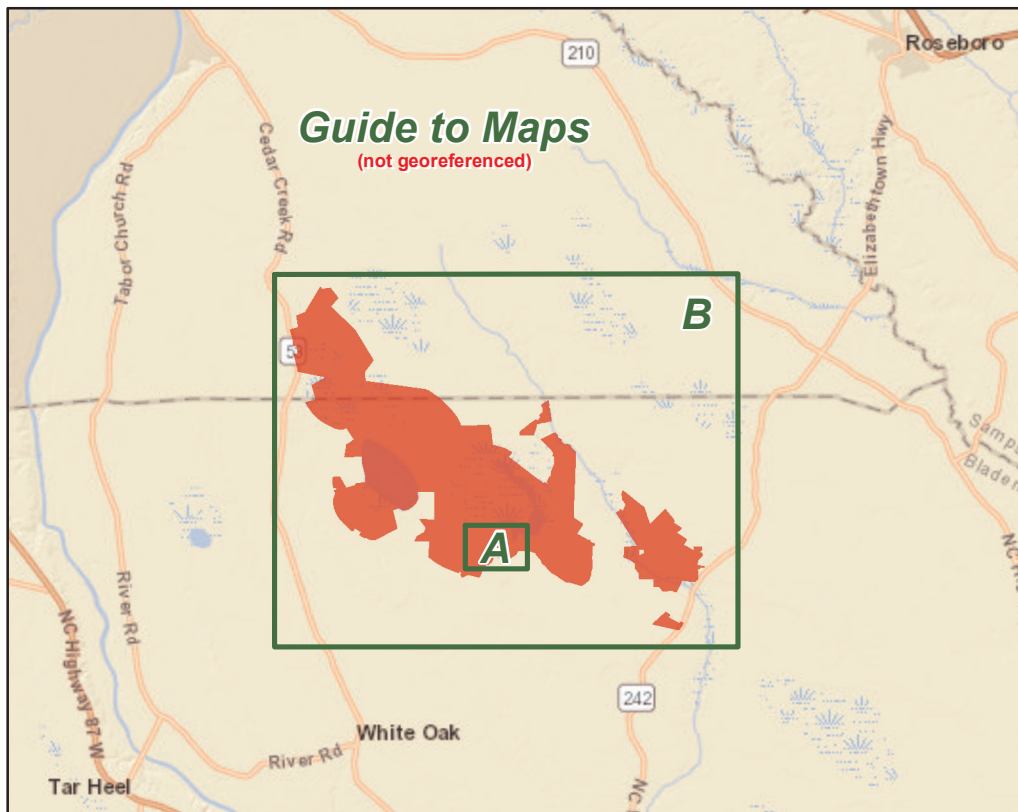
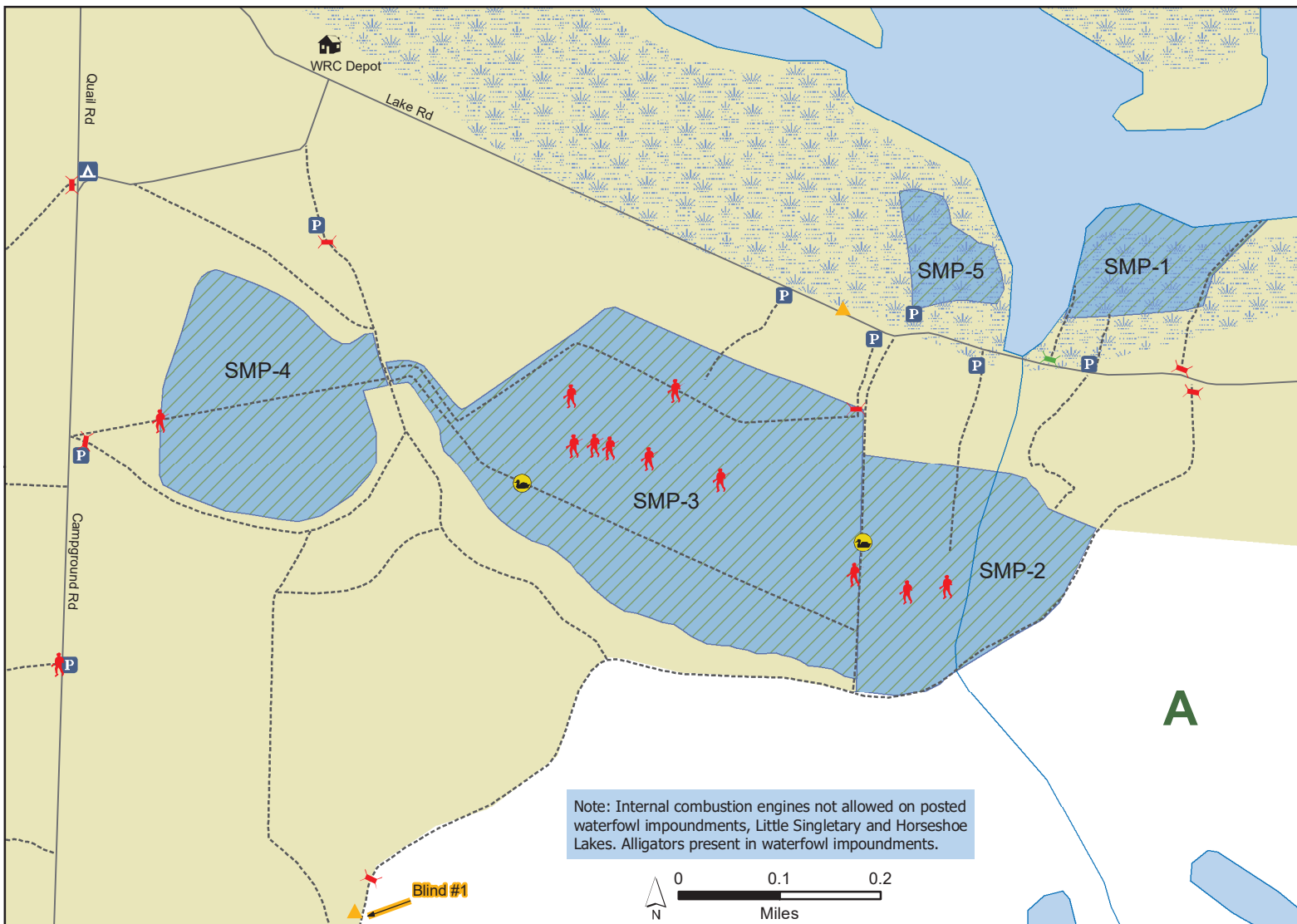


# SUGGS MILL POND GAME LAND

N.C. Wildlife Resources Commission  
Bladen and Cumberland Counties (11,077 total acres)



- Designated Camping Area
  - Disabled Sportsman Access
  - Disabled Sportsman Blind
  - Gate Open Sep. 1-Mar. 1, Apr. 1 - End of Turkey Season
  - Gate Closed During Turkey Season
  - Permanently Closed Gate
  - Hunter Bridge
  - Public Parking
  - Scouting Area
  - Waterfowl Blind
  - Disabled Sportsman Access Road
  - Secondary Road
  - Trail
  - State Park
- Game Land Type**
- Black Bear Sanctuary
  - Waterfowl Impoundment



**SUGGS MILL POND GAME LAND (continued)**  
N.C. Wildlife Resources Commission  
Bladen and Cumberland Counties

