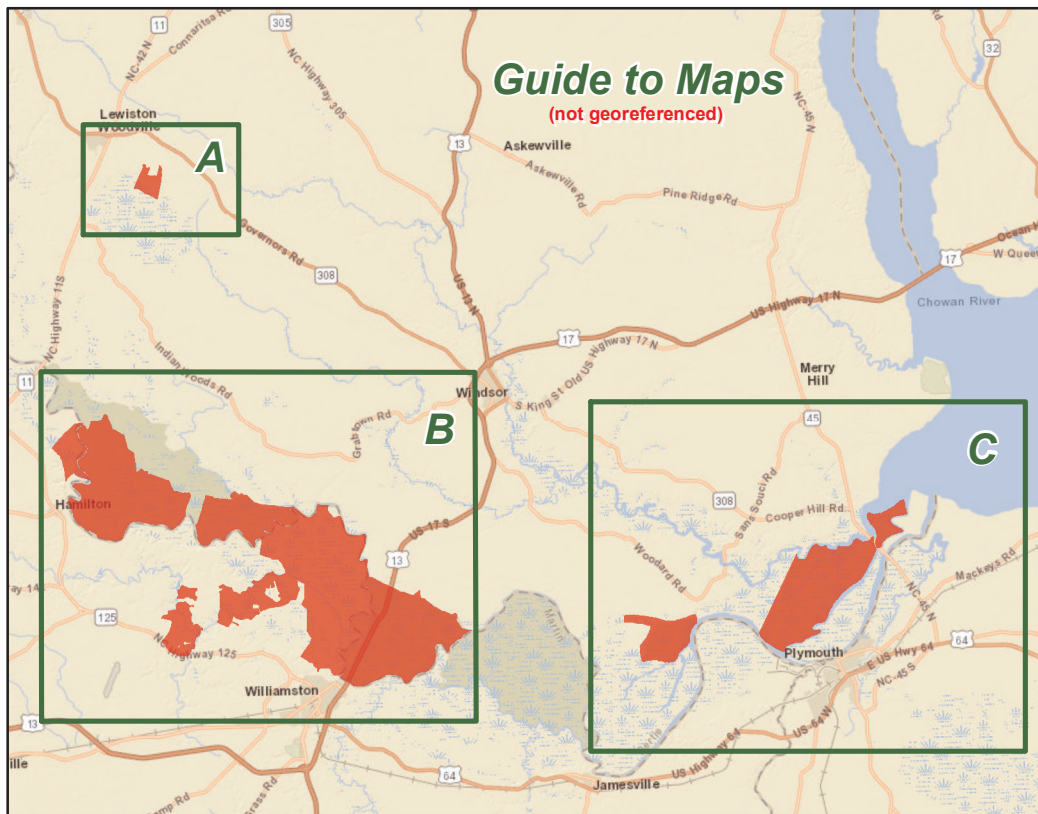


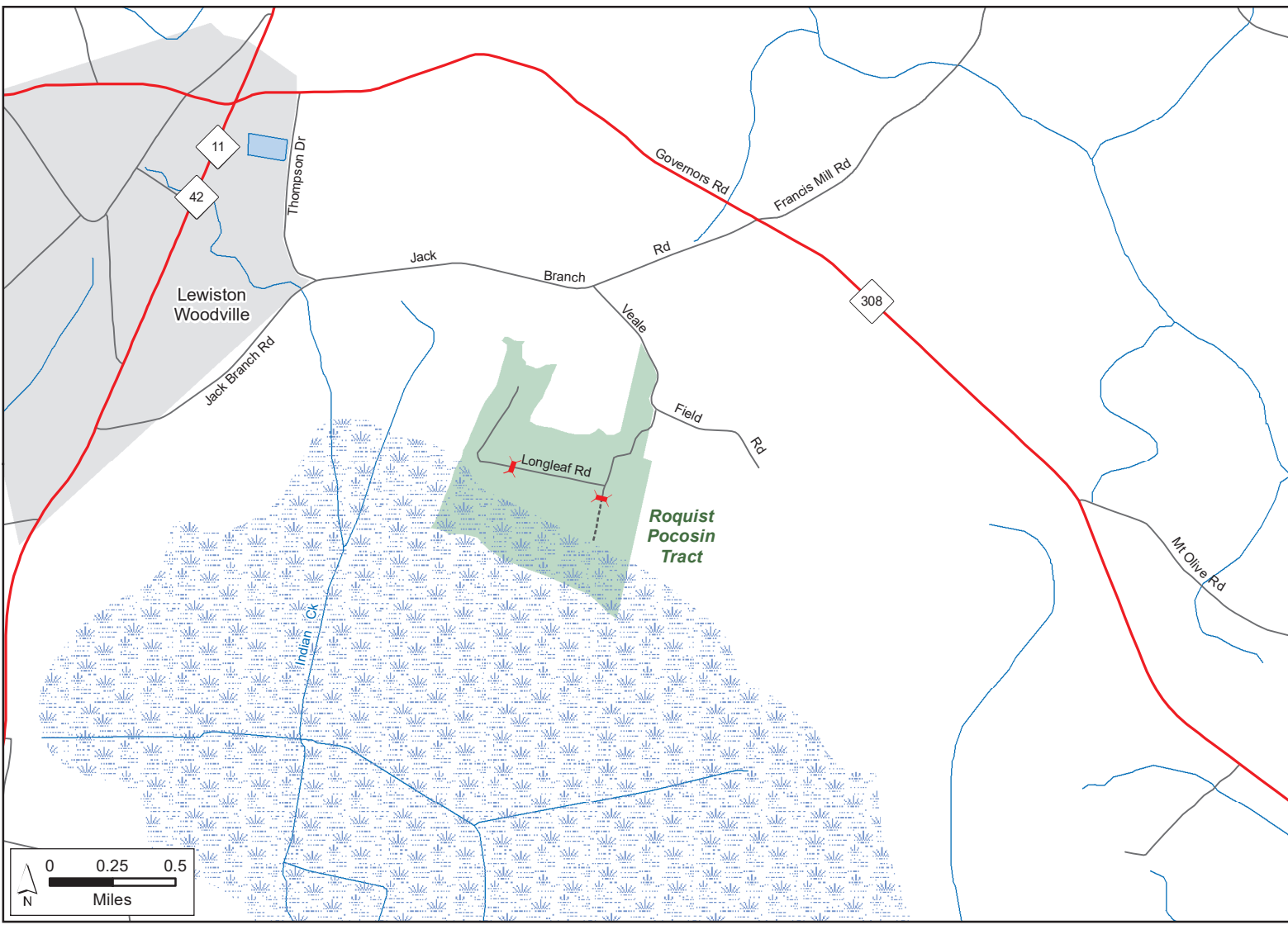
LOWER ROANOKE RIVER WETLANDS GAME LAND

N.C. Wildlife Resources Commission, U.S. Fish & Wildlife Service
Bertie and Martin Counties (31,600 total acres)



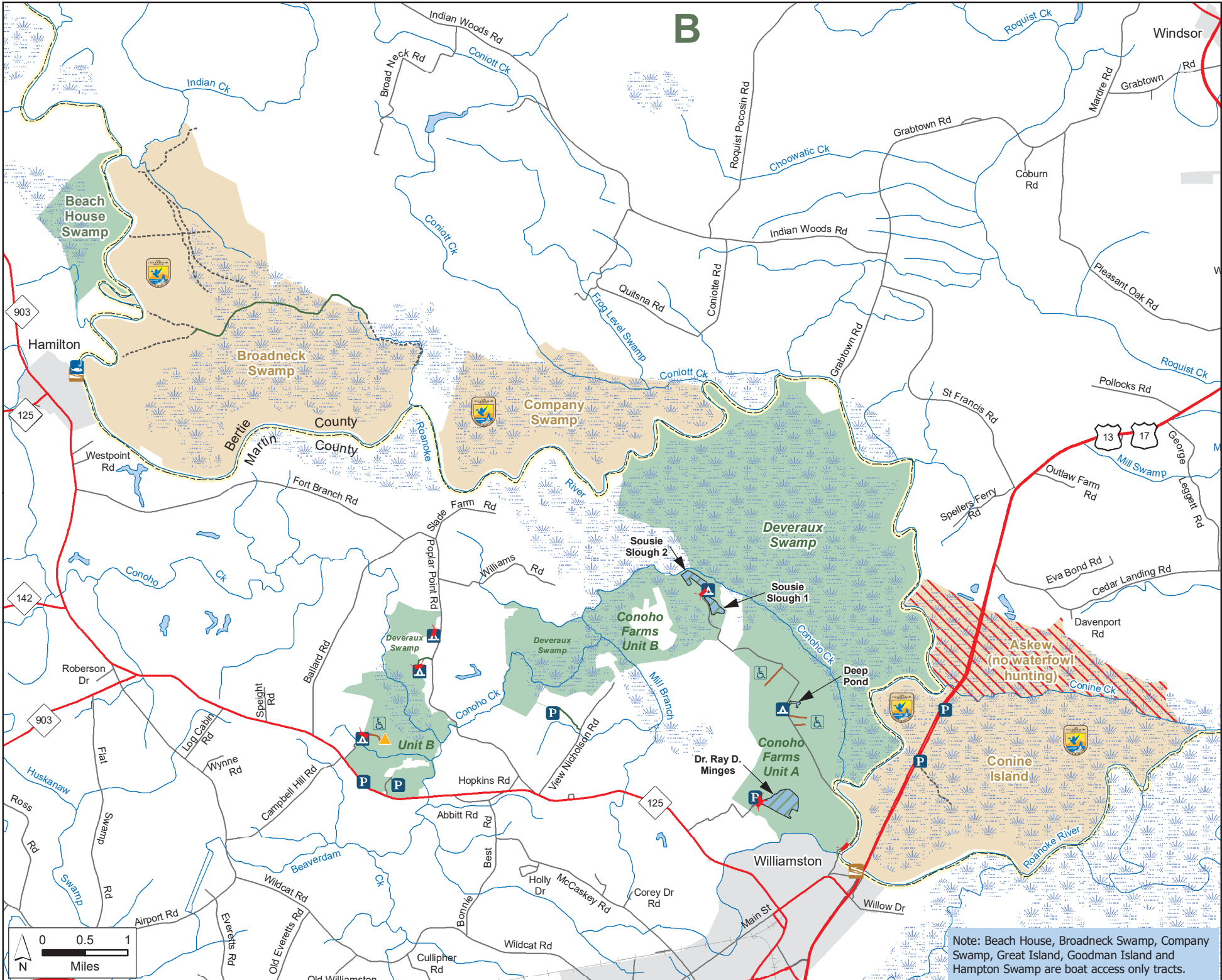
- Designated Camping Area
 - Disabled Sportsman Access
 - Disabled Sportsman Blind
 - Permanently Closed Gate
 - Public Parking
 - Boating Access Area
 - Public Fishing Area
 - Hunter Vehicle Access Road
 - Disabled Sportsman Access Road
 - Secondary Road
 - Trail
- Game Land Type**
- Game Land
 - Waterfowl Impoundment
 - Wildlife Refuge (Federal Land)
 - No Waterfowl Hunting

NOTE: Camping is authorized anytime within 100 yards of the Roanoke River on state-owned portions of the Roanoke River Wetlands and on designated and posted camping areas from Sept. 1 to the last day in Feb. and Mar. 31 to May 14.



LOWER ROANOKE RIVER WETLANDS GAME LAND (continued)

N.C. Wildlife Resources Commission, U.S. Fish & Wildlife Service
Bertie and Martin Counties

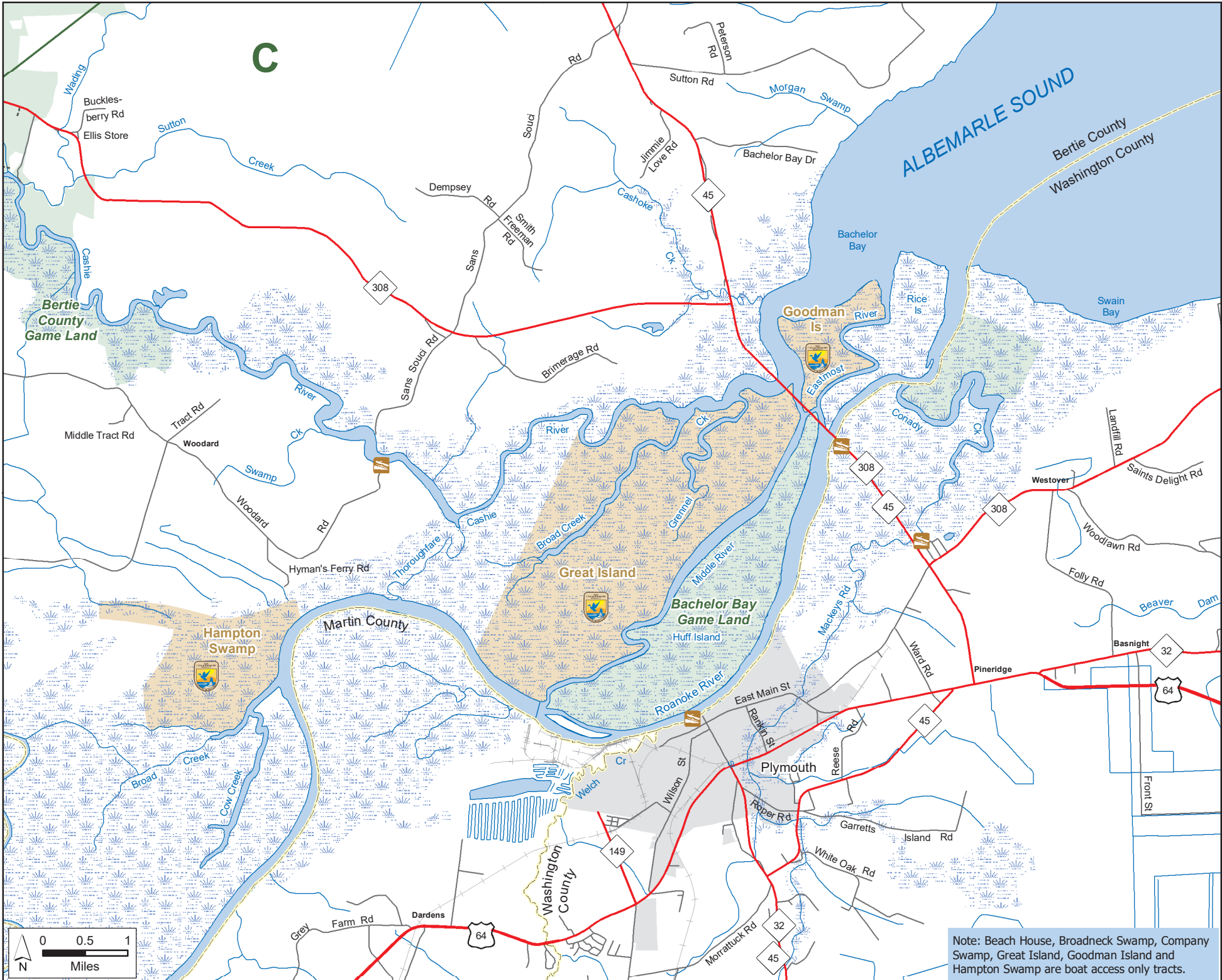


Note: Beach House, Broadneck Swamp, Company Swamp, Great Island, Goodman Island and Hampton Swamp are boat access only tracts.



LOWER ROANOKE RIVER WETLANDS GAME LAND (continued)

N.C. Wildlife Resources Commission, U.S. Fish & Wildlife Service
Bertie and Martin Counties



Note: Beach House, Broadneck Swamp, Company Swamp, Great Island, Goodman Island and Hampton Swamp are boat access only tracts.

