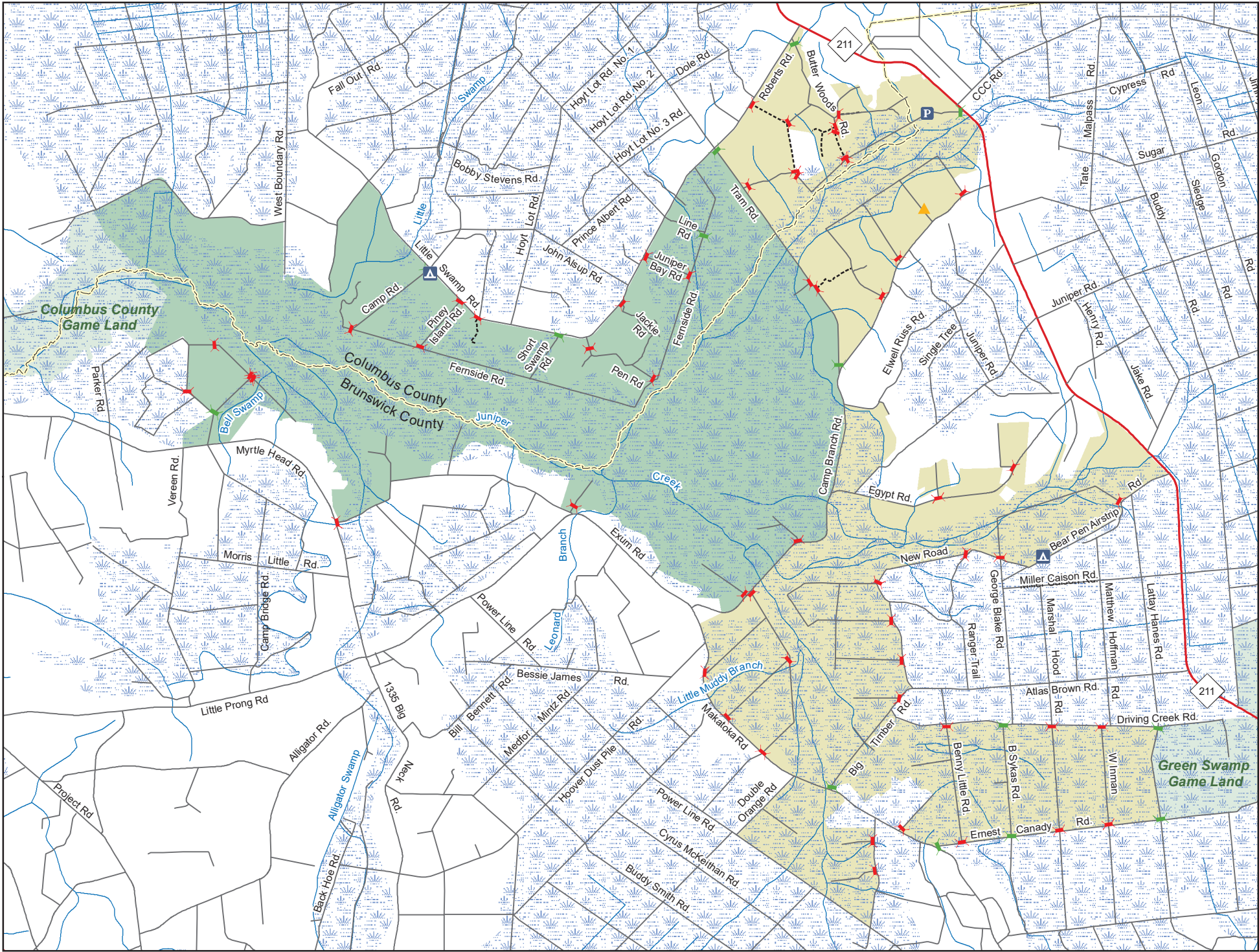


JUNIPER CREEK GAME LAND
 N.C. Wildlife Resources Commission
 Brunswick and Columbus Counties (20,477 acres)



- Designated Camping Area
- Gate Open Sep.1 - Mar.1, Apr.1-End Of Turkey Season
- Permanently Closed Gate
- Secondary Road
- Disabled Sportsman Blind
- Public Parking
- Trail
- Game Land
- Black Bear Sanctuary

