

HOLLY SHELTER GAME LAND

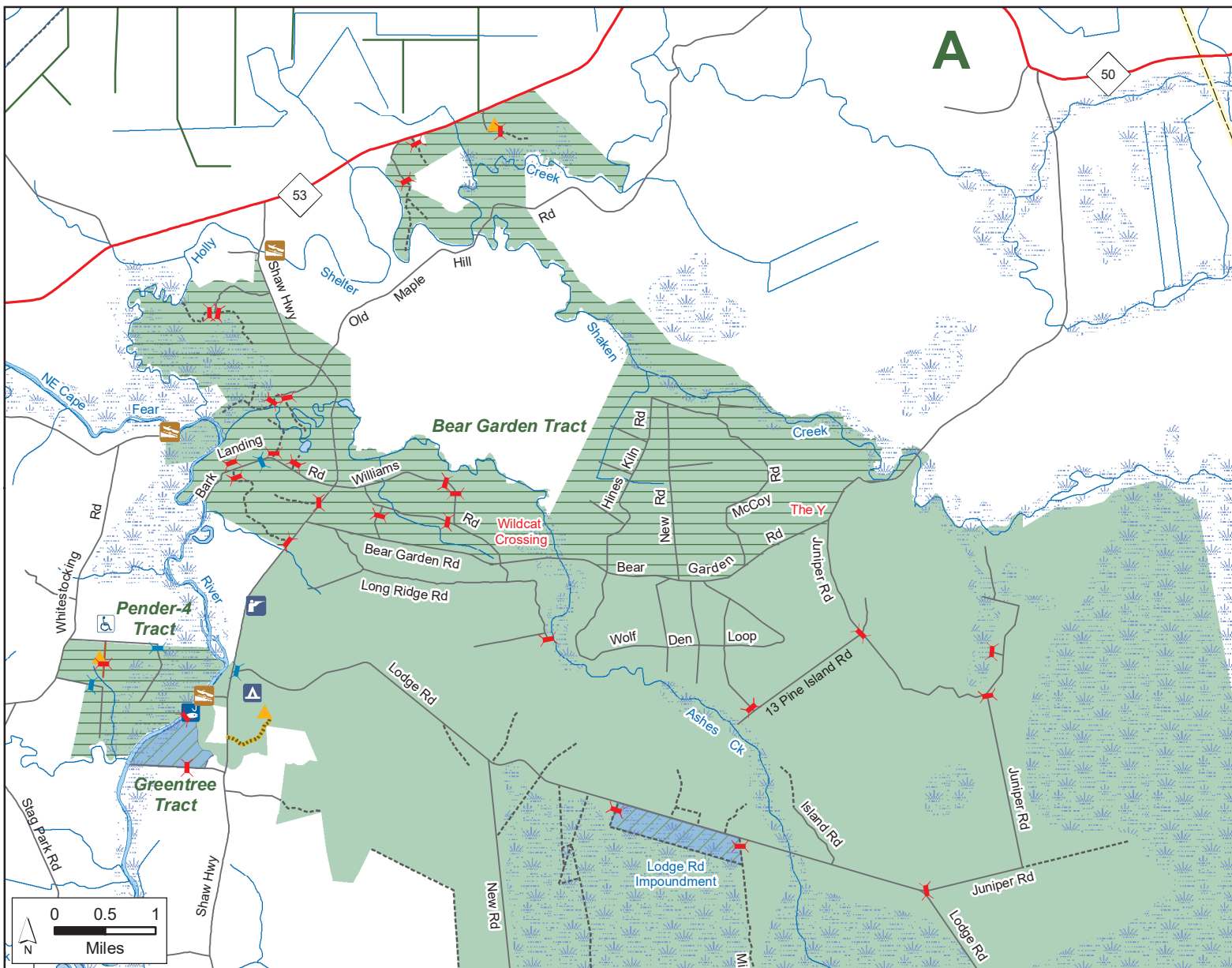
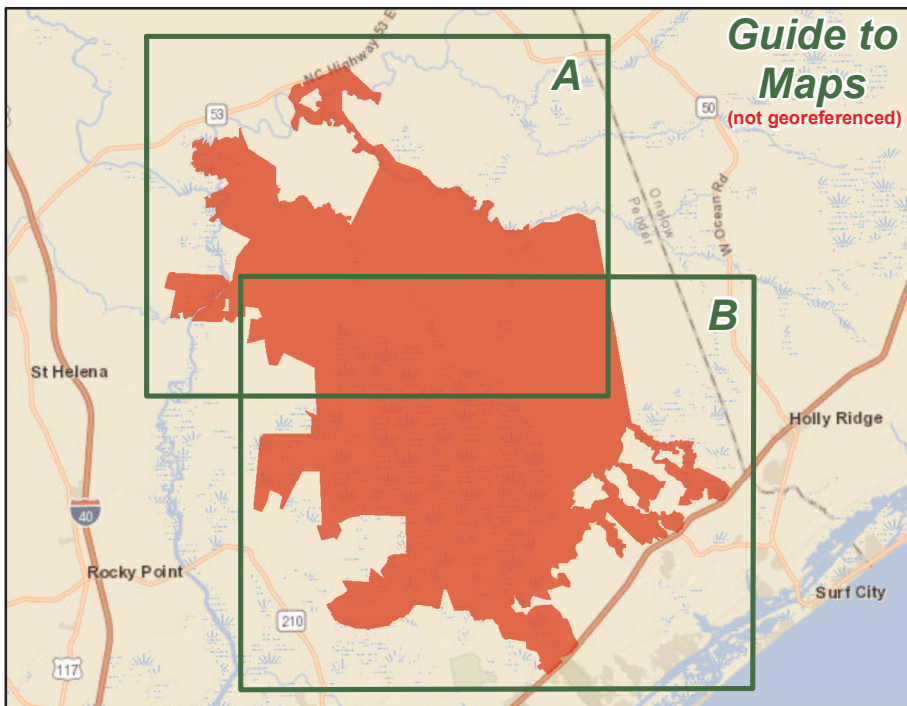
N.C. Wildlife Resources Commission
Pender County (63,580 total acres)

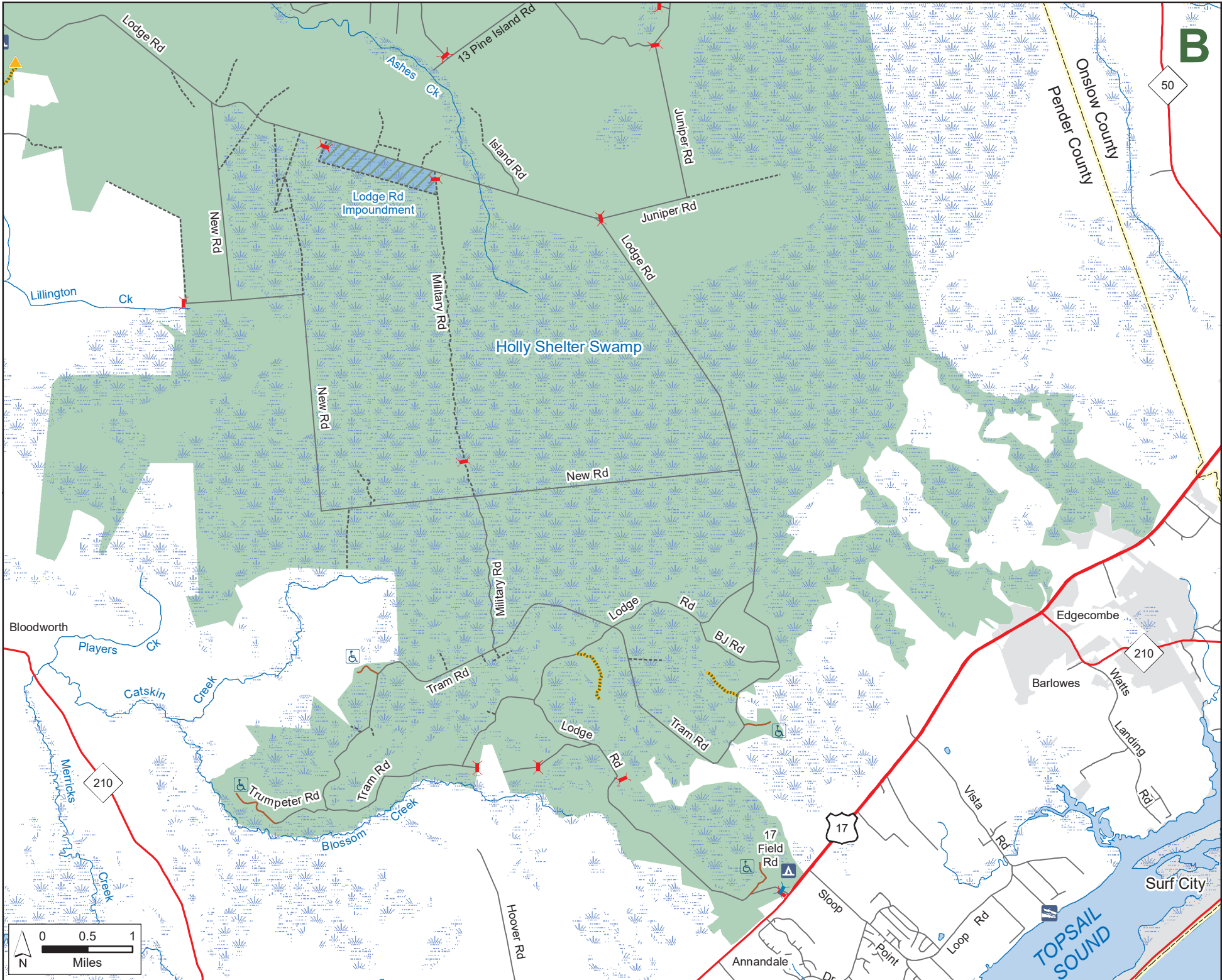


Guide to Maps

(not georeferenced)

- Designated Camping Area
 - Disabled Sportsman Access
 - Disabled Sportsman Blind
 - Gate Open Sep.1 - end of Feb; Mar. 31 - May 14
 - Permanently Closed Gate
 - Public Shooting Range
 - Boating Access Area
 - Public Fishing Area
 - Disabled Sportsman Access Road
 - Disabled Sportsman ATV Road
 - Hunter Vehicle Access Road
 - Secondary Road
 - Trail
- Game Land Type**
- Game Land
 - Special Regulations
 - Waterfowl Impoundment (Alligators present)





B

HOLLY SHELTER GAME LAND (continued)
 N.C. Wildlife Resources Commission
 Pender County

