



## **Waterfowl Impoundment Condition Alerts**

**Updated December 2, 2021**

**Every effort has been made to accurately report existing and/or anticipated conditions that may negatively impact the waterfowl hunting experience, but please note that conditions are subject to change for a variety of reasons and in some cases may vary from the information presented in this report.**

*NOTE: For all areas, refer to the current North Carolina Inland Fishing, Hunting and Trapping Regulations Digest to determine applicable hunt days for waterfowl and special regulations which may apply.*

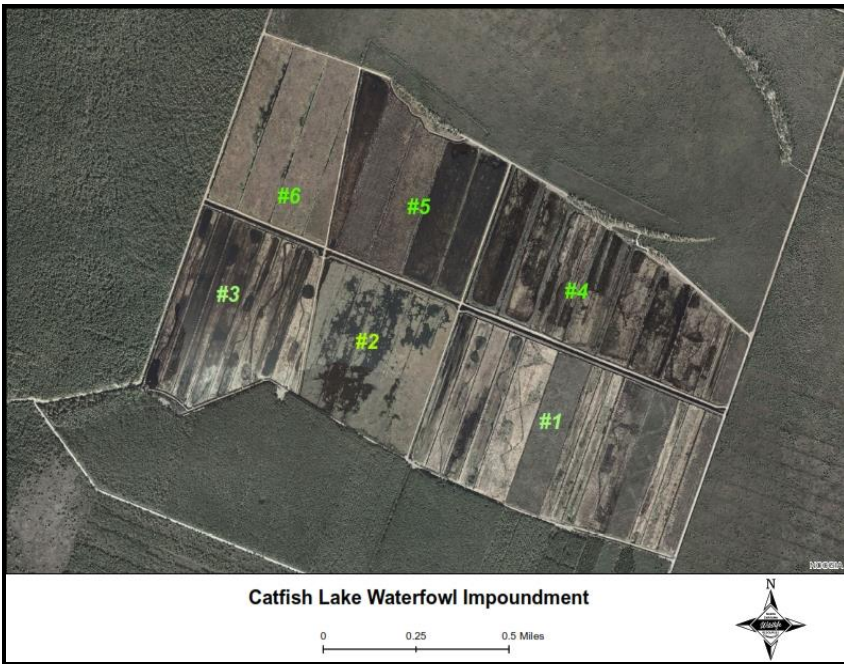
On managed (posted) waterfowl impoundments, hunters shall not enter the posted impoundment areas earlier than 4:00 a.m. on the permitted hunting dates, and hunting is prohibited after 1:00 p.m. on such hunting dates; decoys shall not be set out prior to 4:00 a.m. and must be removed by 3:00 p.m. each day. No person shall operate any vessel or vehicle powered by an internal combustion engine on a managed waterfowl impoundment. On waterfowl impoundments that have a posted "Scouting-only Zone," trapping during the trapping season and waterfowl hunting on designated waterfowl hunting days are the only activities allowed on the portion of the impoundment outside of the posted "Scouting-only Zone."

For impoundments not otherwise noted in this report, conditions are believed to be adequate to support waterfowl hunting.

### **COASTAL REGION**

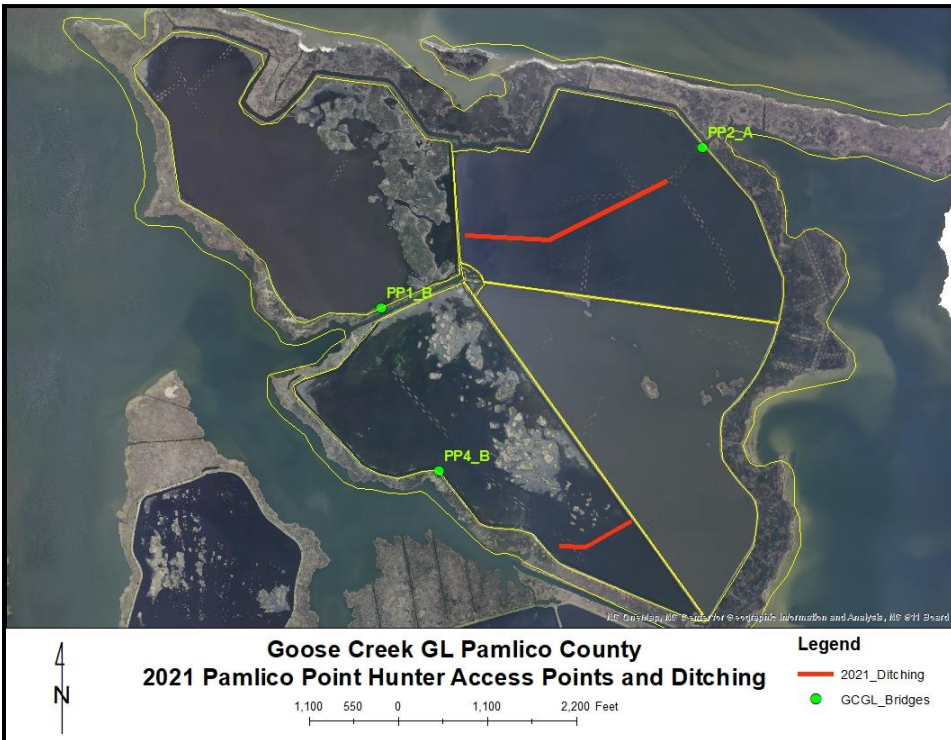
#### **Croatan Game Land - Catfish Lake Impoundment**

Pumping operations are ongoing. Water levels in impoundments #4 and #5 are huntable. Pumping operations will continue until all impoundments are at prescribed levels.



**Goose Creek Game Land Impoundments**

Water levels are at prescribed levels. Some interior ditching was conducted in Pamlico Point 2 and 4. Several bridges have seen repairs over the 2021 summer. Locations of interior ditches and repaired bridges are shown in below maps.





**Goose Creek GL Pamlico County  
2021 Campbell Creek Hunter Access Points**

875 437.5 0 875 1,750 Feet

**Legend**  
 ● CC1  
 ● CC2



**Goose Creek GL Pamlico County  
2021 Spring Creek Hunter Access Points**

660 330 0 660 1,320 Feet

**Legend**  
 ● GCGL\_Bridges

**Holly Shelter Game Land - Green Tree and Lodge Road Impoundments**

Hunters using the Holly Shelter Green Tree Impoundment may experience below optimal water levels. Lodge Road Impoundment is below prescribed level. Pumping operations will continue until impoundment is at full pool.



### **J. Morgan Futch Game Land**

Dry conditions are hampering pumping operations to completely fill each impoundment. Recent rainfall has helped, but we are still unable to run pumps continually. Most blinds are expected to have huntable water as the November opener approaches. As of 10-29-2021, we are pushing water into the impoundment with blinds 5, 12, and 13 and into the impoundment with blinds 15 and 16. Once we reach huntable water levels in those two impoundments, efforts will be directed to the impoundment with blinds 6 and 7. Water around blinds 1-4, 9, 14, 18, and 21 are at desired levels. Blinds 8, 10, 11, 17 and 19 have huntable water and will approach desired levels with continued pumping

### **Lantern Acres Game Land**

The Lantern Acres impoundments are dry. The area has received only 3 inches of rain since August 13 and only 1 inch since August 20. The surrounding wooded wetlands are dry as is the canals. Recent rain showers have had no effect on impoundment water levels. Staff pump water from the surrounding canals but there is not enough water to pump. The well pump was repaired and has been running continuously since October 18. Water is beginning to seep into the lowest portions of the easternmost impoundment. It is not expected to have huntable water until mid to late November. Even then, water will only be in the northern portions of the easternmost impoundment.

### **Rhodes Pond Game Land**

Damage to the dam that impounds water in Rhodes Pond has required draining of the lake for repairs. Normal water levels are not expected throughout the 2021-2022 waterfowl seasons and no permits will be issued.

### **Roanoke River Wetlands Game Land**

The Minges impoundment will not be flooded for the October or November openings unless the Roanoke River floods allow staff to pump from the adjacent swamp. Suzie Slough and Deep Pond impoundments will not be flooded unless the river floods. Waterfowl permit holders can hunt anywhere within the tract for which they are drawn. Waterfowl permit holders can hunt anywhere within the tract for which they are drawn. If the impoundments are not flooded for a hunt, hunters should consider hunting the adjacent swamps.

### **Suggs Mill Pond Game Land**

Due to a damaged water control structure and a severe breach in the dike, hunt unit SMP4 (impoundment #4) will not have water for the 2021-2022 waterfowl season. Waterfowl hunting opportunities in SMP4 should be considered non-existent.

### **White Oak River Game Land**

Water levels at the White Oak Impoundment are at optimal levels. Bridges have been repaired. Hunters should still be prepared to cross ditches using drag boat as needed.

## **PIEDMONT REGION**

### **Butner-Falls of Neuse Game Land**

Water levels will be at the desired pool for the November season and at full pool for the December-January season.

Little River, Hwy. 98, and Lower Brickhouse Rd. Impoundments are **not** included in the 2021-2022 flooding schedule.

**R. Wayne Bailey-Caswell Game Land**

Water levels are anticipated to be at or near full pool for the November season and at full pool for the December-January seasons.

**Jordan Game Land**

Water levels will be at the desired pool for the November season and at full pool for the December-January seasons.

Impoundments #2 Lower Little Creek, #3 New Hope Creek, #5 Northeast Creek, and #7 I-40 are **not** included in the 2021-2022 flooding schedule.

**Second Creek Game Land**

The posted waterfowl impoundment on Second Creek Game Land does not include control structures to facilitate artificial manipulation of water levels. This area is completely dependent on rainfall and collection of surface water; therefore, conditions may vary throughout the season.